

Technische Daten *Technical datas*

Typ <i>Type</i>		EPRM-W 50	EPRM-W 80	EPRM-W 100	EPRM-W 125	EPRM-W 160	EPRM-W 200	EPRM-W 250	EPRM-W 315	EPRM-W 400
Schluckvolumen <i>Displacement cm³/U ccm/rev [in³/rev]</i>		51,5 [3.14]	80,3 [4.90]	99,8 [6.09]	125,7 [7.67]	159,6 [9.74]	199,8 [12.19]	250,1 [15.26]	315,7 [19.26]	397,0 [24.40]
Max. Drehzahl <i>Max. Speed U/min RPM</i>	Dauerbetrieb <i>Continuous working</i>	734	750	600	475	375	300	300	240	190
	Intermittierend* <i>Intermittent *</i>	1029	940	750	600	470	375	360	285	226
Max. Drehmoment <i>Max. Torque daNm [lb-in]</i>	Dauerbetrieb <i>Continuous working</i>	10,0 [900]	20,0 [1770]	24,0 [2125]	30,0 [2655]	39,0 [3450]	45,0 [4000]	54,0 [4780]	55,0 [4870]	61,0 [5400]
	Intermittierend* <i>Intermittent *</i>	13,0 [1150]	22,0 [1947]	28,0 [2480]	34,0 [3010]	43,0 [3805]	50,0 [4425]	61,0 [5400]	69,0 [6100]	69,0 [6100]
	Spitze ** <i>Peak **</i>	17,0 [1505]	27,0 [2390]	32,0 [2832]	37,0 [3275]	46,0 [4070]	56,0 [4960]	71,0 [6280]	84,0 [7430]	87,0 [7700]
Max. Leistungsabgabe <i>Max. Output kW [HP]</i>	Dauerbetrieb <i>Continuous working</i>	7,0 [9.5]	12,5 [17.0]	13,0 [17.4]	12,5 [16.8]	11,5 [15.4]	11,0 [14.8]	10,0 [13.4]	9,0 [12.0]	7,8 [10.5]
	Intermittierend* <i>Intermittent *</i>	8,5 [11.9]	15,0 [20.1]	15,0 [20.1]	14,5 [19.5]	14,0 [18.8]	13,0 [17.4]	12,0 [16.1]	10,0 [13.4]	10,6 [14.2]
Max. Druckgefälle <i>Max. Pressure drop bar [PSI]</i>	Dauerbetrieb <i>Continuous working</i>	140 [2030]	175 [2540]	175 [2540]	175 [2540]	175 [2540]	175 [2540]	175 [2540]	135 [1960]	110 [1600]
	Intermittierend* <i>Intermittent *</i>	175 [2540]	200 [2900]	200 [2900]	200 [2900]	200 [2900]	200 [2900]	200 [2900]	175 [2540]	140 [2030]
	Spitze ** <i>Peak **</i>	225 [3260]	225 [3260]	225 [3260]	225 [3260]	225 [3260]	225 [3260]	225 [3260]	210 [3045]	175 [2540]
Max. Ölstrom <i>Max. Oil flow l/min lpm [GPM]</i>	Dauerbetrieb <i>Continuous working</i>	40 [10.5]	60 [15.8]	60 [15.8]	60 [15.8]	60 [15.8]	60 [15.8]	75 [19.8]	75 [19.8]	75 [19.8]
	Intermittierend* <i>Intermittent *</i>	50 [13.2]	75 [19.8]	75 [19.8]	75 [19.8]	75 [19.8]	75 [19.8]	90 [23.8]	90 [23.8]	90 [23.8]
Max. Eingangsdruck <i>Max. Inlet pressure bar [PSI]</i>	Dauerbetrieb <i>Continuous working</i>	175 [2540]	175 [2540]	175 [2540]	175 [2540]	175 [2540]	175 [2540]	175 [2540]	175 [2540]	175 [2540]
	Intermittierend* <i>Intermittent *</i>	200 [2900]	200 [2900]	200 [2900]	200 [2900]	200 [2900]	200 [2900]	200 [2900]	200 [2900]	200 [2900]
	Spitze ** <i>Peak **</i>	225 [3260]	225 [3260]	225 [3260]	225 [3260]	225 [3260]	225 [3260]	225 [3260]	225 [3260]	225 [3260]
Max. Rücklaufdruck mit Leckölleitung <i>Max. Return pressure with drain line bar [PSI]</i>	Dauerbetrieb <i>Continuous working</i>	175 [2540]	175 [2540]	175 [2540]	175 [2540]	175 [2540]	175 [2540]	175 [2540]	175 [2540]	175 [2540]
	Intermittierend* <i>Intermittent *</i>	200 [2900]	200 [2900]	200 [2900]	200 [2900]	200 [2900]	200 [2900]	200 [2900]	200 [2900]	200 [2900]
	Spitze ** <i>Peak **</i>	225 [3260]	225 [3260]	225 [3260]	225 [3260]	225 [3260]	225 [3260]	225 [3260]	225 [3260]	225 [3260]
Max. Anlaufdruck mit unbelasteter Welle <i>Max. starting pressure with unloaded shaft</i>	bar [PSI]	10 [145]	10 [145]	10 [145]	9 [130]	7 [102]	5 [73]	5 [73]	5 [73]	5 [73]
Min. Anlaufmoment bei max. Druckgefälle <i>Min. starting torque at max. pressure drop daNm [lb-in]</i>	Dauerbetrieb <i>Continuous working</i>	8,0 [710]	15,0 [1330]	20,0 [1770]	25,0 [2215]	32,0 [2832]	41,0 [3630]	50,0 [4425]	50,0 [4425]	50,0 [4425]
	Intermittierend* <i>Intermittent *</i>	10,0 [885]	17,0 [1505]	23,0 [2035]	28,0 [2480]	37,0 [3275]	46,0 [4070]	55,0 [4870]	66,0 [5840]	61,0 [5400]
Min. Drehzahl *** <i>Min speed ***</i>	U/min RPM	10	10	10	10	10	10	10	10	10
Gewicht <i>Weight</i>	kg [lb]	9,6 [21.2]	9,7 [21.4]	9,8 [21.7]	10,0 [22.1]	10,3 [22.7]	10,8 [23.8]	11,3 [24.9]	11,8 [26.0]	12,5 [27.6]

* Intermittierend: Betrieb max. 10% pro Minute

** Spitze: max. 1% pro Minute

*** Für Drehzahlen kleiner der min. Drehzahl sprechen Sie uns bitte an.

- Intermittierende Druckgefälle und Ölströme dürfen nicht gleichzeitig erreicht werden.

- Minimale Viskosität 13 mm²/s [70 SUS] bei 50° C [122° F]

- Maximale Öltemperatur während des Betriebs 82° C [180° F]

- Die Lebensdauer der Motoren kann erhöht werden, wenn die Antriebswelle 10-15 Minuten vor voller Belastung frei läuft.

* Intermittent: Working max. 10% per minute

** Peak: max. 1% per minute

*** For speeds lower than given, please consult us.

- Intermittent speed and pressure should not occur simultaneously.

- Recommended minimum oil viscosity 13 mm²/s [70 SUS] at 50° C [122° F]

- Recommended maximum system operating temperature is 82° C [180° F]

- To assure optimum motor life fill with fluid prior to loading and run at moderate load and speed for 10-15 minutes.

Bestellcode EPRM®-W Ordercode EPRM®-W

EPRM-W	1	2	3	4	5	6	7
--------	---	---	---	---	---	---	---

Pos. 1	Schluckvolumen <i>Displacement</i>
50	51,5 cm ³ /U <i>ccm/rev</i> [3.14 in ³ /rev]
80	80,3 cm ³ /U <i>ccm/rev</i> [4.90 in ³ /rev]
100	99,8 cm ³ /U <i>ccm/rev</i> [6.09 in ³ /rev]
125	125,7 cm ³ /U <i>ccm/rev</i> [7.67 in ³ /rev]
160	159,6 cm ³ /U <i>ccm/rev</i> [9.74 in ³ /rev]
200	199,8 cm ³ /U <i>ccm/rev</i> [12.19 in ³ /rev]
250	250,1 cm ³ /U <i>ccm/rev</i> [15.26 in ³ /rev]
315	315,7 cm ³ /U <i>ccm/rev</i> [19.26 in ³ /rev]
400	397,0 cm ³ /U <i>ccm/rev</i> [24.40 in ³ /rev]

Pos. 2	Abtriebswelle* <i>Shaft*</i>
CB	Zylindrisch Ø32, Passfeder A10x8x45 DIN 6885 <i>Cylindrical Ø32, parallel key A10x8x45 DIN 6885</i>
KB	Konisch 1:10 Ø35, Passfeder B6x6x20 DIN 6885 <i>Tapered 1:10 Ø35, parallel key B6x6x20 DIN 6885</i>
OB	Konisch 1:8 Ø1 1/4", Passfeder 5/16" x 5/16" x 1 1/4" BS46 <i>Tapered 1:8 Ø1 1/4", parallel key 5/16" x 5/16" x 1 1/4" BS46</i>

Pos. 3	Wellendichtung <i>Shaft seal</i>
frei omit	Standard Wellendichtung <i>Standard shaft seal</i>
U	Für Höchstdruck (ohne Rückschlagventile) <i>For highest pressure (without check valves)</i>
UK	Für Höchstdruck (mit Rückschlagventile) <i>For highest pressure (with check valves)</i>

Pos. 4	Leckölanschluss <i>Drain port</i>
frei omit	Mit Leckölanschluss <i>With drain port</i>
1	Ohne Leckölanschluss <i>Without drain port</i>

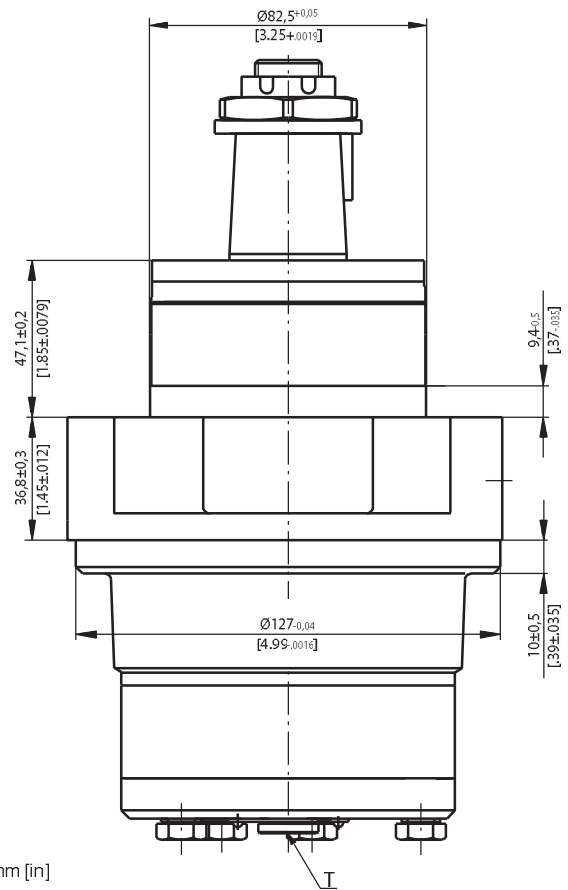
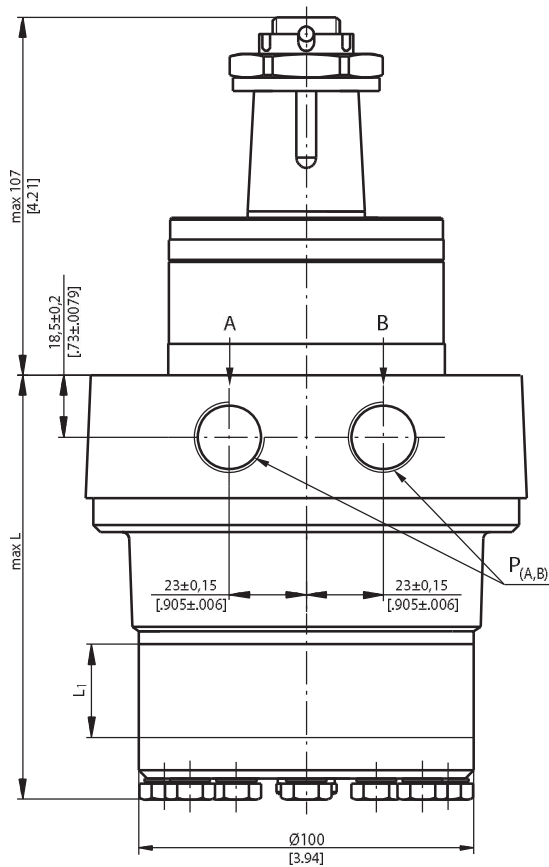
Pos. 5	Anschlüsse <i>Ports</i>
frei omit	BSPP (ISO 228)
M	Metrisch <i>metric</i> (ISO 262)

Pos. 6	Sonderausführungen <i>Special features</i>
LL	Geringeres Lecköl <i>Low Leakage</i>
LSV	Ventil für geringe Drehzahlen <i>Low speed valve</i>
FR	Leichtlaufausführung (nicht für EPRM-N) <i>Free running (not for EPRM-N)</i>
R	Drehrichtung umgedreht <i>Reverse rotation</i>
P	Lackiert (Farbe auf Anfrage) <i>Paint (Colour on request)</i>
PC	Korrosionsschutzfarbe (Farbe auf Anfrage) <i>Corrosion protected paint (Colour on request)</i>

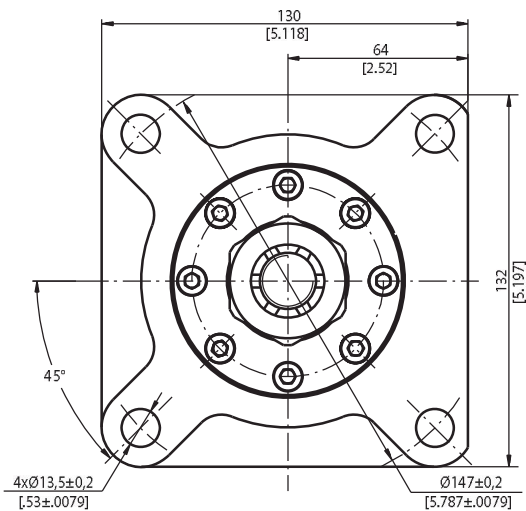
Pos. 7	Design Serie <i>Design series</i>
frei omit	Betriebspezifisch <i>Factory specified</i>

* Zulässige Momentabgabe darf nicht überschritten werden
Permissible output torque should not be exceeded

Pos. 1 Schluckvolumen Displacement



P (A,B): 2xG1/2 oder or 2xM22x1,5 - 17mm [.67 in] tief deep
T: G1/4 oder or M14x1,5 - 12 mm [.47 in] tief deep



Standarddrehung

mit Blick auf Abtriebswelle
Druck auf Anschluss **A** - rechtsdrehend
Druck auf Anschluss **B** - linksdrehend

Reversierdrehung (Pos. 6 - Option R)

mit Blick auf Abtriebswelle
Druck auf Anschluss **A** - linksdrehend
Druck auf Anschluss **B** - rechtsdrehend

Standard rotation

Viewed from shaft end
Port **A** pressurized- right running
Port **B** pressurized- left running

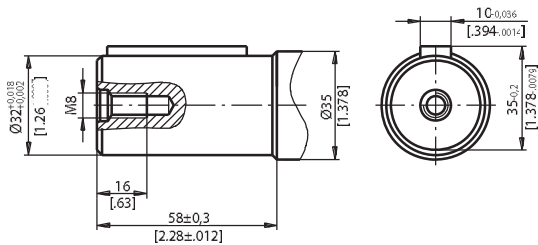
Reversierdrehung (Pos. 6 - Option R)

Viewed from shaft end
Port **A** pressurized- left running
Port **B** pressurized- right running

Typ Type	L mm [in]	L ₁ mm [in]
EPRM-W 50	108,0 [4.25]	9,0 [.35]
EPRM-W 80	113,0 [4.45]	14,0 [.55]
EPRM-W 100	116,5 [4.59]	17,4 [.69]
EPRM-W 125	120,5 [4.74]	21,8 [.86]
EPRM-W 160	126,5 [4.98]	27,8 [1.09]
EPRM-W 200	133,5 [5.26]	34,8 [1.37]
EPRM-W 250	142,5 [5.61]	43,5 [1.71]
EPRM-W 315	153,5 [6.04]	54,8 [2.16]
EPRM-W 400	168,5 [6.63]	69,4 [2.73]

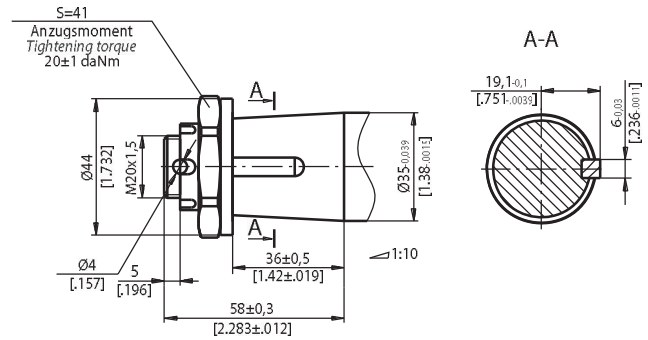
Pos. 2 Abtriebswelle Shaft

Option CB: Zylindrisch Ø32 mm
Option CB: Cylindrical Ø32 mm



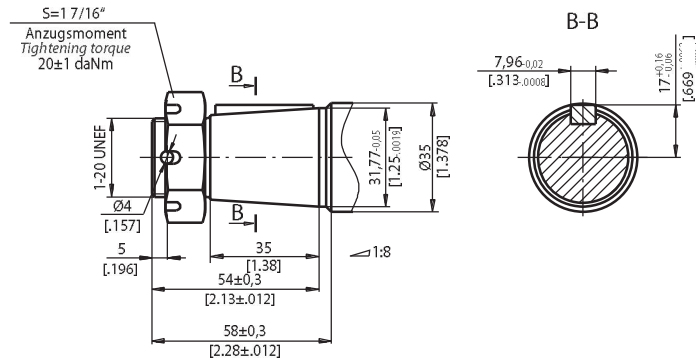
Max. Drehmomentabgabe 77 daNm [6815 lb-in]
 Max. Torque 77 daNm [6815 lb-in]

Option KB: Konisch 1:10
Option KB: Tapered 1:10



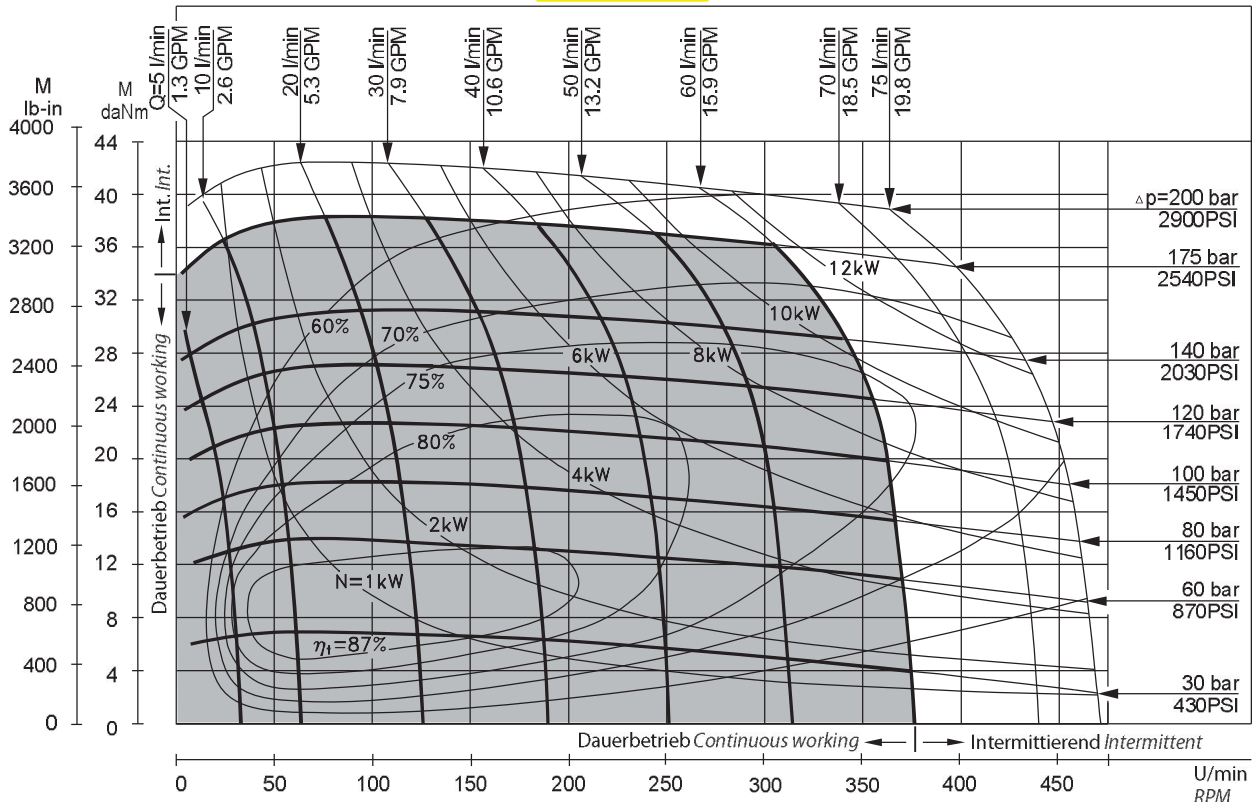
Max. Drehmomentabgabe 77 daNm [6815 lb-in]
 Max. Torque 77 daNm [6815 lb-in]

Option OB: Konisch 1:8
Option OB: Tapered 1:8



Max. Drehmomentabgabe 77 daNm [6815 lb-in]
 Max. Torque 77 daNm [6815 lb-in]

EPRM-W 160



Die Leistungsdiagramme werden bei einem Rücklaufdruck von 5-10 bar [72.5-145 PSI] erreicht. Kinematische Viskosität des Hydrauliköls 32 mm²/s [150 SUS] bei 50° C [122° F]

The function diagrams data is for average performance of randomly selected motors at back pressure 5-10 bar [72.5-145 PSI] and oil viscosity of 32 mm²/s [150 SUS] at 50° C [122° F]

EPRM-W 200

